

CTC&G

Connecticut Cottages and Gardens

COTTAGES-GARDENS.COM | OCTOBER 2013

PHOTO: JEFFREY W. HARRIS

ART: EMILY A. HARRIS

Celebrating

DESIGN

FALL FOR FABRICS | LEGENDARY DECORATORS | FAMED GARDENS



DISAPPEARING ACT

The new Chablis oak cabinetry combines the texture and feel of antique solid oak planks with technology to create a door front that lies flat. Prices vary, Eggersmann, A&D, NYC, 212-688-4910, eggersmannusa.com.



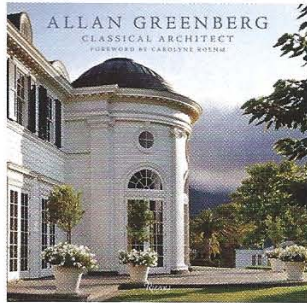
FIT FOR A QUEEN

Add a piece of history to an interior with the Couture collection's Sabine chair, which features carved whitewashed wood and natural linen upholstery. \$1,195, Safavieh, Danbury, 203-790-7200, Stamford, 203-327-4800, safavieh.com.

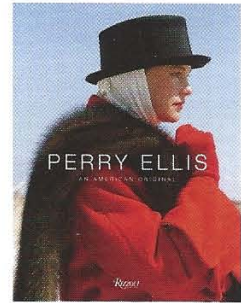


SURFACE APPEAL

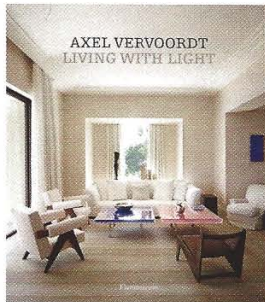
Embellish your foyer with this unique, hard-wearing flooring from Paris Ceramics—a new waterjet Palais marble with a re-created classic French design. \$34.95 per square foot, Paris Ceramics, A&D, NYC, 212-644-2782, parisceramicsusa.com.
—Morgan Dancy



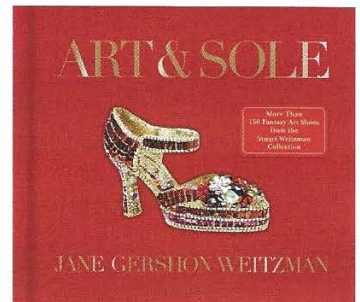
Allan Greenberg: Classical Architect (Rizzoli, 2013) by Allan Greenberg illustrates the interconnectedness of architecture and classic tradition. \$75, rizzoliusa.com.



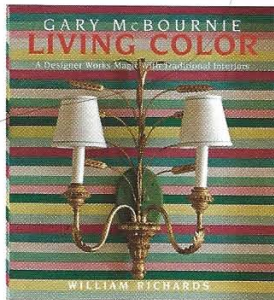
Perry Ellis: An American Original (Rizzoli, 2013), by Jeffrey Banks, Erica Lennard and Doria de La Chapelle, pays homage to the legacy of designer Perry Ellis and his signature looks. \$75, rizzoliusa.com.



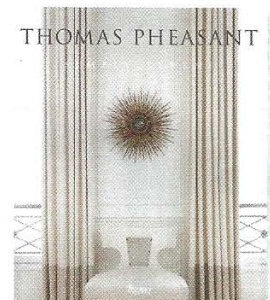
Living with Light (Flammarion, 2013) by Axel Vervoordt celebrates the importance of light and space. \$75, groupe-flammarion.com.



Art & Sole (Harper Design, 2013) by Jane Gershon Weitzman highlights artistic interpretations of Stuart Weitzman's classic shoes. \$30, harpercollins.com.



Living Color: A Designer Works Magic with Traditional Interiors (Pointed Leaf Press, 2013) by Gary McBournie looks at the art of creating interiors with a distinct color palette. \$75, pointedleafpress.com.



Simply Serene (Rizzoli, 2013) by Thomas Pheasant showcases the interior designer's balancing act between classical elements and modern details. \$60, rizzoliusa.com.